

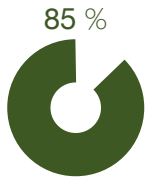


FARNSFIELD

SEED QUALITY

Conventional Seed

Average germination capacity over 10 years :



Average purity rate over 5 years:



TYPE Dioecious

EARLY-MATURING Full Flowering noted for October & March (at latitude -18 S to -30 S)

CYCLE DURATION 90 Days

FIBRE Rich

PERCENTAGE in $\Delta 9$ -THC < 0,2%

CDB Low Level

SEED SIZE AVG 3.4mm



Cultivar Information and Characteristics

The maternal parent was tall in spring planting but shorter in autumn. FARNSFIELD has low THC reported, the paternal parent was short, early flowering, very low to low in THC content with short inflorescence branches and medium bast fibre content. FARNSFIELD can be sown in September or February for grain production and November or August for fibre production.

Cost & Seed Quality

\$15.90/kg Treated Seed

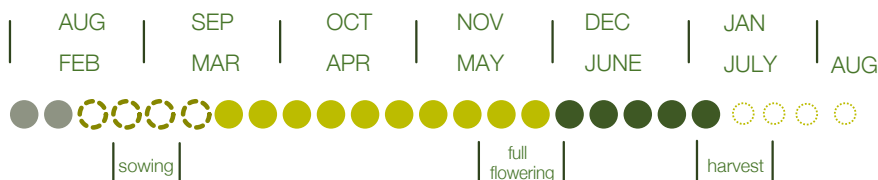
67,750 seeds for kilogram

12% Moisture & 98.5% Purity

84% + Germination Rate

MAIN USAGE IN LATITUDE -16S - -30 S: SEEDS

- sowing possible
- growth
- ageing
- harvest possible



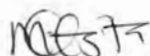
INDUSTRIAL VARIETIES
seed or mixed-oriented

CERTIFICATE OF ANALYSIS

SAMPLE NAME		H96S19S1 Hazeldene	
FORM		Raw material	
CUSTOMER NAME		Canna Hemp Care Pty Ltd	
CERTIFICATION DATE		25 July 2019	
CUSTOMER REFERENCE		H96S19S1 Hazeldene	
ARL JOB #	A191650	LAB REF. #	ARL1904506
ANALYSIS	Cannabinoids - THC - GC (plant m	METHOD	ARL-TM108

TEST	SPECIFICATION	RESULTS
		% w/w
Δ^9 -THC*	Not specified	0.12

* Assay by GC (FID detection), calculated as Δ^9 -THC

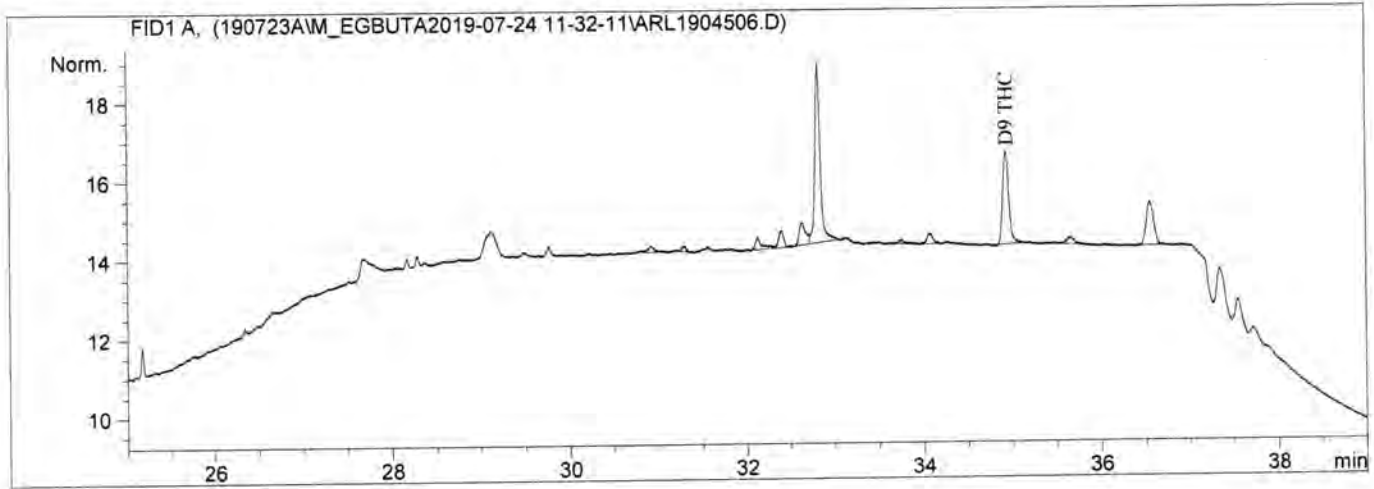


DR MARY EGBUTA
ANALYTICAL OFFICER



MR ASHLEY DOWELL
MANAGER - ARL

```
=====
Acq. Operator   : M.Egbuta                      Seq. Line :   18
Acq. Instrument : GC-1                          Location  : Vial 49
Injection Date  : 7/25/2019 2:29:12 AM          Inj       :    1
                                                    Inj Volume: 1 µl
Acq. Method     : D:\DATA\190723A\M_Egbuta2019-07-24 11-32-11\QACANN5.M
Last changed    : 10/31/2017 11:37:15 AM by BB
Analysis Method : D:\METHODS\ARCHIVE2018\QA METHODS\QACANN5L.M
Last changed    : 7/25/2019 10:36:17 AM by GS
                  (modified after loading)
Method Info     : FAST ESSENTIAL OIL analysis on BPX5.0 50M
=====
```



=====
ESTD Percent Report
=====

```
Sorted By           : Signal
Calib. Data Modified : 7/25/2019 10:36:19 AM
Multiplier          : 1.0000
Dilution            : 50.0000
Sample Amount       : 1044.60000 [mg]
Use Multiplier & Dilution Factor with ISTDs
```

Signal 1: FID1 A,

RetTime [min]	Type	Area [pA*s]	Amt/Area	Amount %	Grp	Name
34.938	BB	11.33111	2.23137e-3	0.121022		D9 THC
Totals :				0.121022		

=====
*** End of Report ***

M.Egbuta
25/7/19